



CORPORATE SOCIAL RESPONSIBILITY

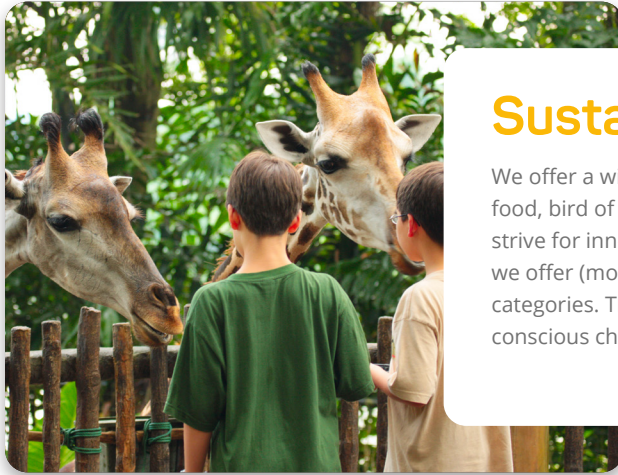
IT'S IN OUR NATURE

THE KIEZEBRINK CSR POLICY

At Kiezebrink, we have a strong focus on food, but that certainly doesn't mean we ignore other important matters. We actively pursue a CSR policy across various areas, and we're happy to tell you more about it.

KIEZEBRINK

FEEDING ANIMALS AS
NATURE INTENDED



Sustainable Products

We offer a wide range of products in the fields of pet food, bird of prey nutrition, and zoo animal feed. We strive for innovation, including sustainability. That's why we offer (more) sustainable products across various categories. This allows our customers to make conscious choices when purchasing animal feed.

Prey animals from residual streams

Many of the prey animals we sell come from so-called "residual streams." For example, our day-old chicks are male chicks from the laying hen industry. The young male goats we sell are also residual products, as they cannot be used in the dairy goat industry. A large portion of the rats and mice we offer are bred for laboratories but are not always needed there and are therefore available to us.

MSC Fish

We offer a wide variety of fish species in our range. These are mainly purchased by zoos to feed various fish-eating animals. Since early 2019, we have been officially MSC certified, allowing us to offer sustainably caught fish to our customers. To promote sustainable fisheries, MSC has defined standards — rules that fishermen and supply chain partners must meet to carry the MSC label. Currently, there are two MSC standards: the Fisheries Standard and the Chain of Custody Standard. These standards make it possible to assess fisheries and supply chain factors on sustainability and proper management.

The MSC Fisheries Standard evaluates three core principles:

Sustainable Fish Stocks

Fishing must be conducted at a level that ensures the fishery can continue indefinitely and that fish populations remain productive and healthy.



Minimizing Environmental Impact

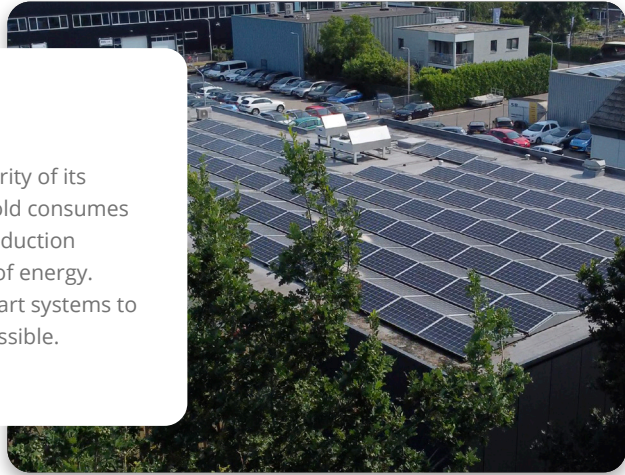
Fisheries must operate carefully to ensure that other marine life and their habitats remain healthy.

Effective Fisheries Management

MSC-certified fisheries must comply with applicable laws and regulations. Compliance is monitored, and fisheries must also be able to adapt to changing environmental conditions that may affect fish stock levels.

Green Energy

Kiezebrink uses freezers to store the majority of its product range. Naturally, keeping these cold consumes a significant amount of electricity. Our production department and offices also require a lot of energy. That's why we've implemented several smart systems to make our energy use as sustainable as possible.



Heat Recovery

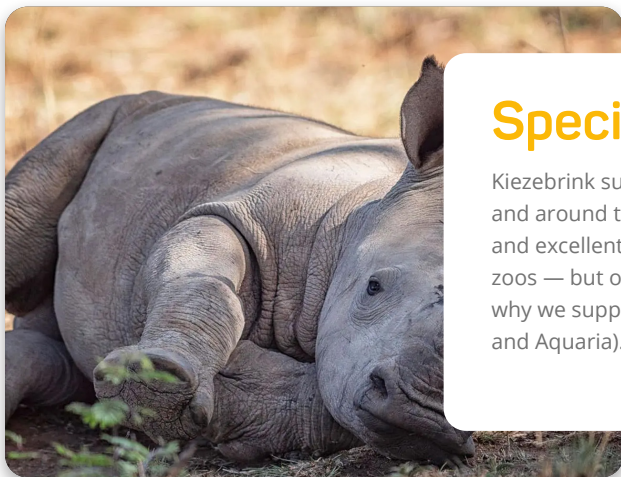
It may sound a bit contradictory, but the motors of our freezers generate a lot of heat while cooling. We don't let this heat go to waste — instead, we use it to heat water. This warm water is used throughout all our buildings. It comes out of the taps and is also used to heat our office spaces.

Solar Panels

We've installed solar panels on three of our buildings — a total of 1,016 panels! These generate a substantial amount of electricity. In 2024 alone, they produced 256,654 kWh. To put that into perspective: that's enough to power approximately 91 average households for a year!

Smart Electricity Meters

With smart electricity meters, we can accurately monitor how much energy we consume and generate. This gives us valuable insight into our usage and helps identify opportunities for improvement.



Species Conservation

Kiezebrink supplies many zoos, both in the Netherlands and around the world. By offering a wide product range and excellent service, we aim to be the ideal partner for zoos — but our involvement goes even further. That's why we support EAZA (European Association of Zoos and Aquaria).

EAZA (European Association of Zoos and Aquaria)

This organization is active in various areas and initiatives directly or indirectly related to zoos

EAZA is involved in, among other things:

Animal Welfare

Sharing information and research to improve the welfare of animals in zoos.



Legislation

In the field of biodiversity protection and other legal and political matters related to animal welfare.

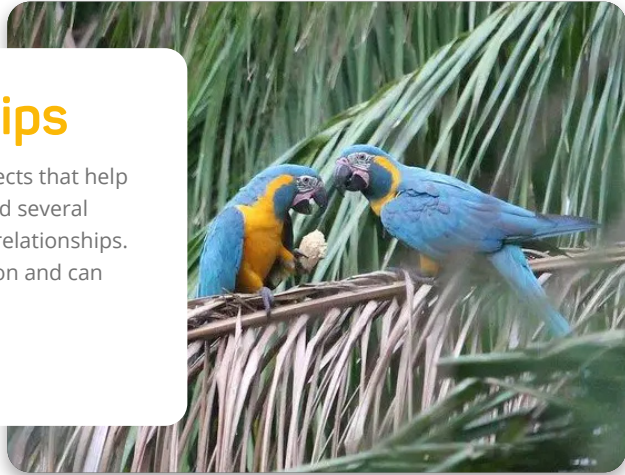
Professional Network of Zookeepers

Establishing standards that zookeepers must meet to work in professional European zoos.

We are a corporate member of EAZA, which means we support them with an annual contribution and, in return, remain actively involved in their activities. Each year, several conferences are organized where we have the opportunity to exhibit with a stand. This allows us to connect with many (potential) customers.

Charity Partnerships

We're proud to support charities and projects that help animals and nature in need. We've selected several projects with which we've built long-term relationships. This way, they know what they can count on and can confidently develop a long-term plan.



Save the Rhino

We support Save the Rhino International in their mission to protect endangered rhinos in South Africa. Through our contribution to their project in Hluhluwe-iMfolozi Park, we help strengthen anti-poaching efforts, improve wildlife monitoring, and build long-term conservation capacity.

Painted Dog Conservation

Through our collaboration with Painted Dog Conservation in Zimbabwe, we help safeguard the future of the African Wild Dog. From funding education programs to supporting anti-poaching efforts, our contribution plays a role in preserving this unique species and empowering local communities.

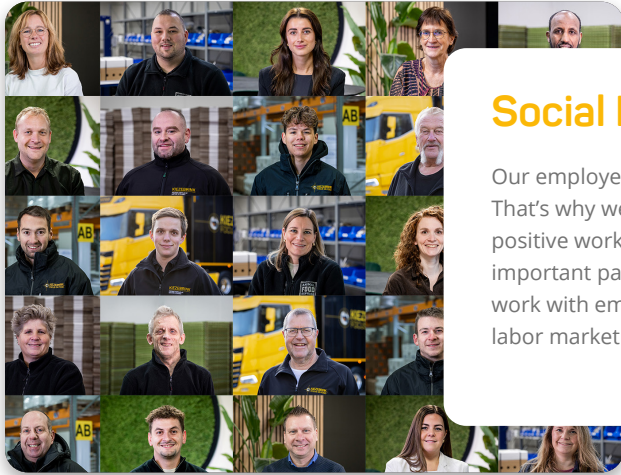
Mountain Marmoset Conservation Program (MMCP)

We proudly support the Mountain Marmoset Conservation Program, an initiative dedicated to protecting two critically endangered marmoset species in Brazil. Through our DK Tamarin & Marmoset diet, we directly contribute to vital conservation efforts — helping preserve biodiversity and ensure a future for these unique primates in the wild.

Barba Azul Nature Reserve

Through our support of the Barba Azul Nature Reserve in Bolivia, we help protect endangered species and restore fragile ecosystems. Every purchase of our DK Insectivore diet contributes directly to essential conservation work — ensuring a future for unique wildlife like the Blue-throated Macaw and the giant anteater.



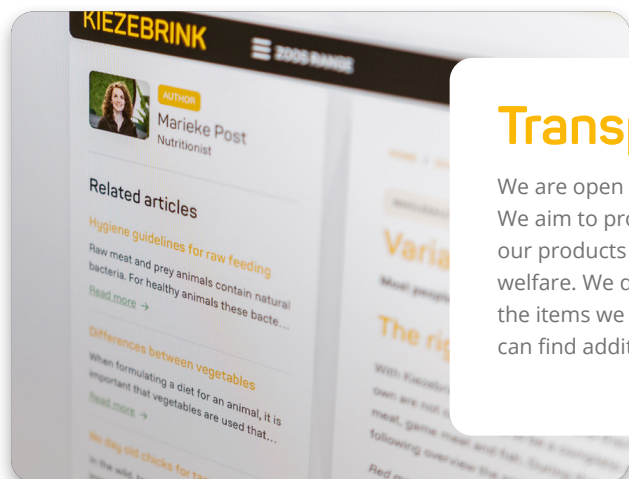
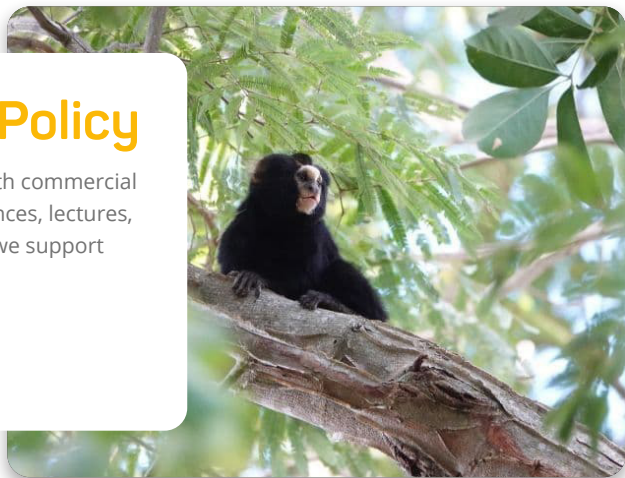


Social Responsibility

Our employees are what make the company what it is. That's why we ensure good working conditions and a positive work environment. Equal opportunities are an important part of this. One of the reasons is we also work with employees who face challenges entering the labor market.

Active Sponsorship Policy

We maintain an active sponsorship policy in both commercial and social areas. We regularly sponsor conferences, lectures, and events within the zoo community. Locally, we support various events and initiatives.



Transparency

We are open and honest about the products we sell. We aim to provide the clearest possible picture of how our products score in terms of sustainability and animal welfare. We do this through detailed product sheets for the items we supply to zoos. Want to know more? You can find additional information in our knowledge base.

Composition of products

We also clearly state how our products are composed. On the packaging of our own brands, KB RAW and Alaska, you'll find exactly which ingredients are used and in what proportions. This way, customers know exactly what they are feeding their pets.



Product Responsibility

At Kiezebrink, we employ two nutritionists who specialize in the nutrition of non-production animals. In collaboration with universities and veterinarians, we conduct research and continuously work on improvements to produce responsible products. By attending conferences and staying up to date with new research, we keep our knowledge current.

Current knowledge

At Kiezebrink, we continuously stay abreast of the latest insights in zoo and pet nutrition. We follow current scientific research, collaborate with experienced nutritionists, and actively participate in (international) conferences. As a member of EAZA (European Association of Zoos and Aquaria), we contribute to knowledge sharing within the zoo sector. For developments in pet food, we are affiliated with the NVG (Dutch Companion Animal Food Industry) and participate in a specialized working group on raw pet food. This ensures that our products and advice are always based on the most recent and reliable information.